



Rare Offering on Lake Martin

Location: Lake Martin, Hwy. 229 and McCain Rd., Eclectic, AL 36064

Size: +/- 48 Acres

Terrain: Rolling forested hills and +/- 500' of Lake Martin waterfront

Use: Rural and residential development

Features/Description: Offering on beautiful Lake Martin. +/- 1600' of paved road frontage on McCain Rd., +/- 120' on Hwy. 229, +/- 1200' on Camp Talisi Rd. (improved gravel and dirt rd.) and +/- 500' of waterfront. Mature pine and hardwood forested landscape offers an abundance of wildlife viewing and nature's beauty. Investors, Builders, and Developers will find this an ideal property to let their design ideas capture the natural beauty. The surrounding area is serene, quiet home sites, on and off the Lake and scattered farms.

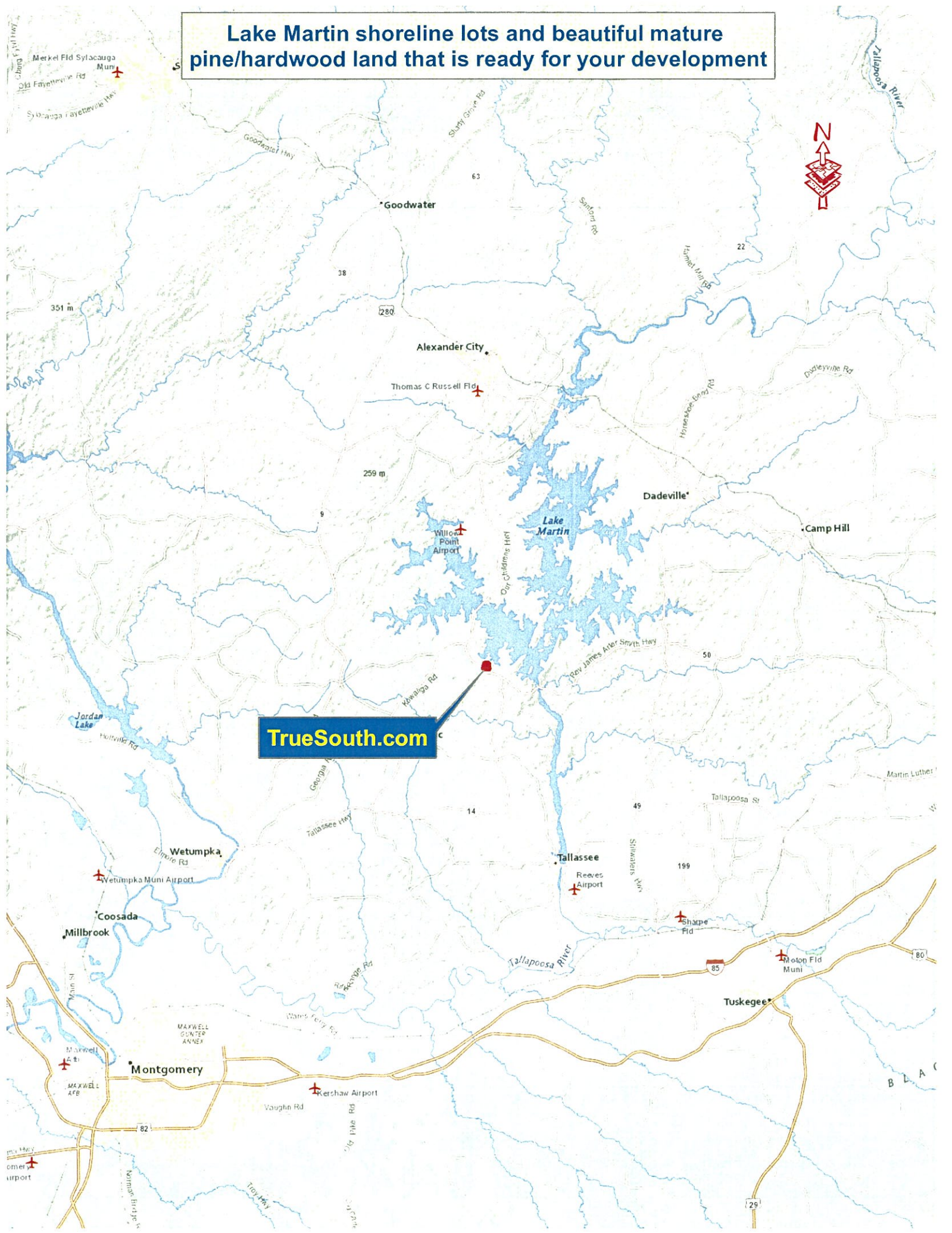
Hunters, Fishermen and Nature lovers: this property will put you in the middle of some of the best outdoor opportunities in Alabama.

Property location makes it an ideal commute from Eclectic (10 miles, 14 minutes), Wetumpka (22 miles, 28 minutes), Alexander City (20 miles, 25 minutes), Tallassee (12 miles, 18 minutes), Montgomery (38 miles, 51 minutes) and Auburn (36.6 miles, 44 minutes). (***)Mileage and driving times provided by Bing Maps).

Agents: Bob Roberts, 334-850-6503 and Jim Solvason, RF, 334-372-3360

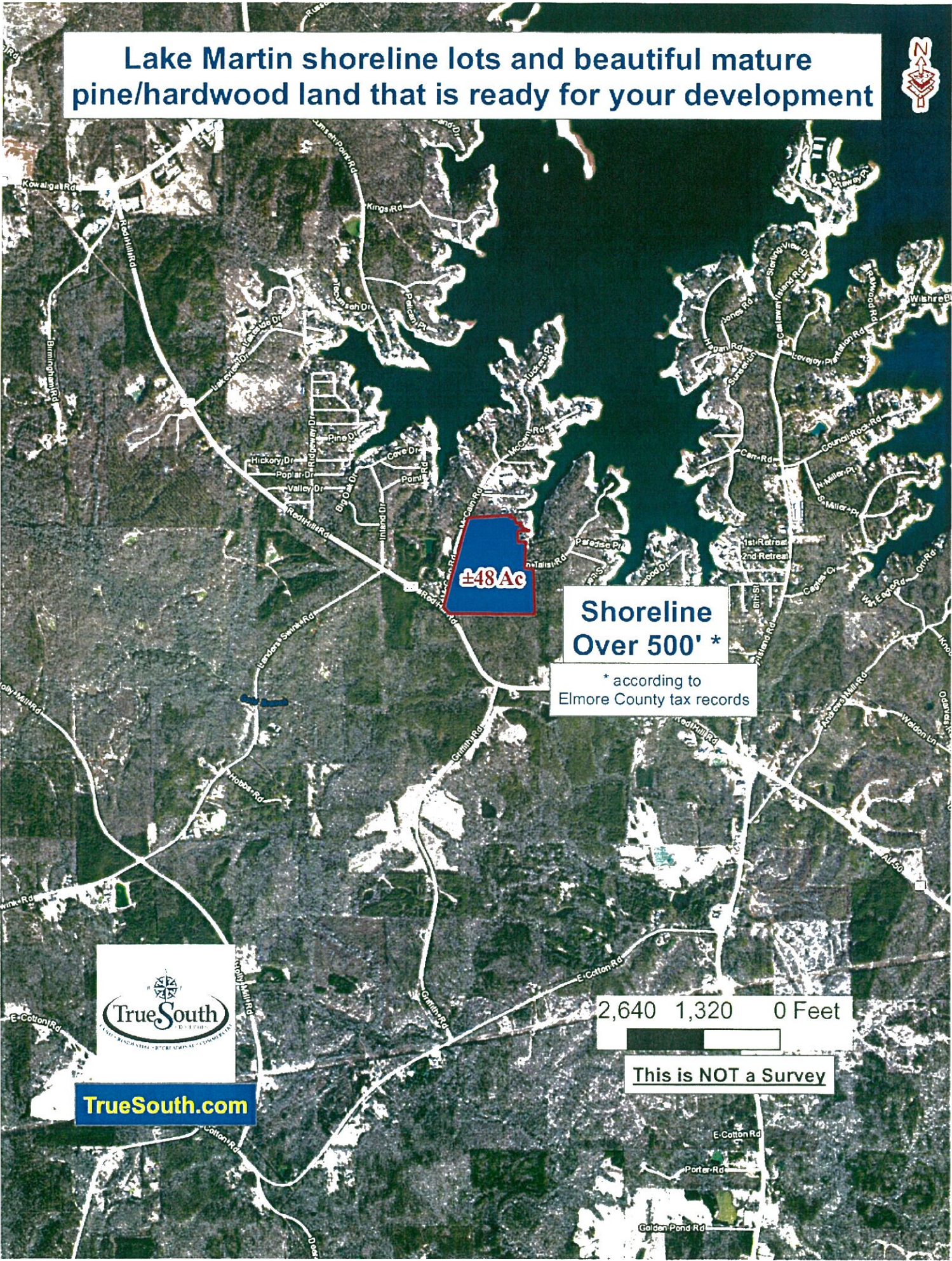
Agents have used their best efforts and good faith to obtain reliable information. TrueSouth Properties, or any of its agents, cannot guarantee the accuracy of any information. Information is collected by agents from sources that agents deem reliable.

Lake Martin shoreline lots and beautiful mature pine/hardwood land that is ready for your development



TrueSouth.com

Lake Martin shoreline lots and beautiful mature pine/hardwood land that is ready for your development



±48 Ac

**Shoreline
Over 500' ***

* according to
Elmore County tax records

2,640 1,320 0 Feet

This is NOT a Survey



TrueSouth.com

E Cotton Rd
Porter Rd
Golden Pond Rd

Lake Martin shoreline lots and beautiful mature pine/hardwood land that is ready for your development



Shoreline
Over 500' *

* according to
Elmore County tax records

±48 Ac



TrueSouth.com

1,000 500 0 Feet

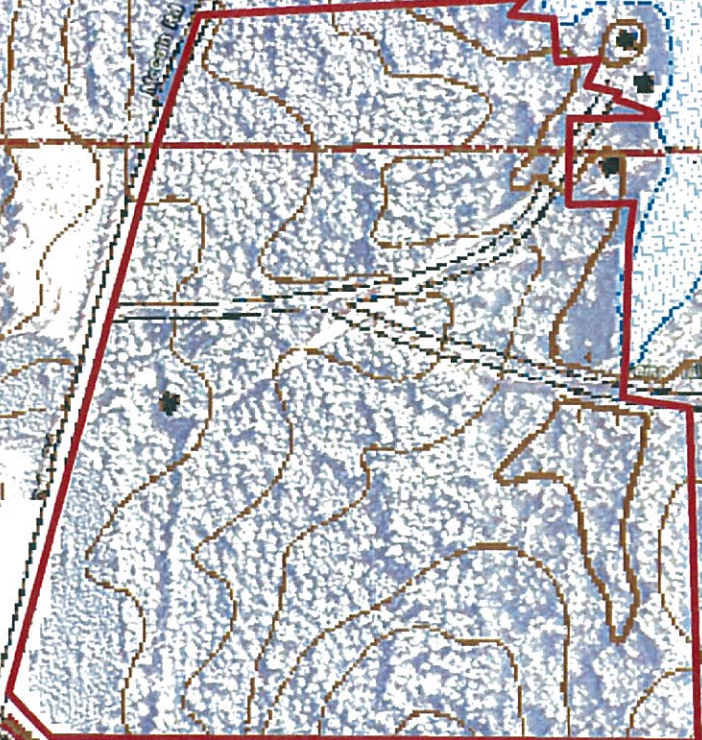
This is NOT a Survey

Lake Martin shoreline lots and beautiful mature pine/hardwood land that is ready for your development



Shoreline
Over 500' *

* according to
Elmore County tax records



TrueSouth.com



This is NOT a Survey

Kennedy +/- 48 Acres Lake Martin

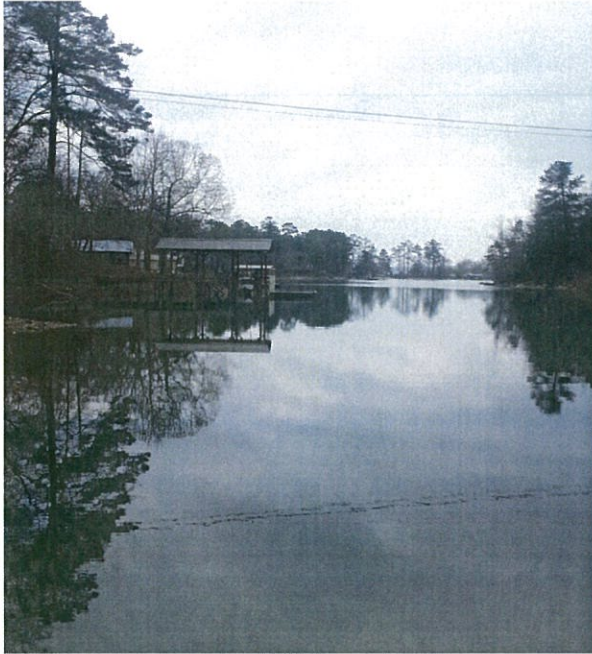
Photos



Agents have used their best efforts and good faith to obtain reliable information. TrueSouth Properties, or any of its agents, cannot guarantee the accuracy of any information. Information is collected by agents from sources that agents deem reliable.

Kennedy +/- 48 Acres Lake Martin

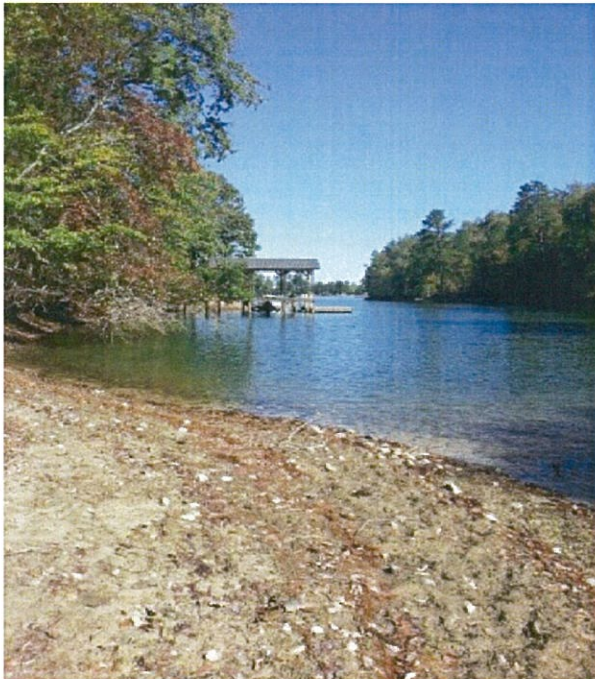
Photos



Agents have used their best efforts and good faith to obtain reliable information. TrueSouth Properties, or any of its agents, cannot guarantee the accuracy of any information. Information is collected by agents from sources that agents deem reliable.

Kennedy +/- 48 Acres Lake Martin

Photos



Agents have used their best efforts and good faith to obtain reliable information. TrueSouth Properties, or any of its agents, cannot guarantee the accuracy of any information. Information is collected by agents from sources that agents deem reliable.