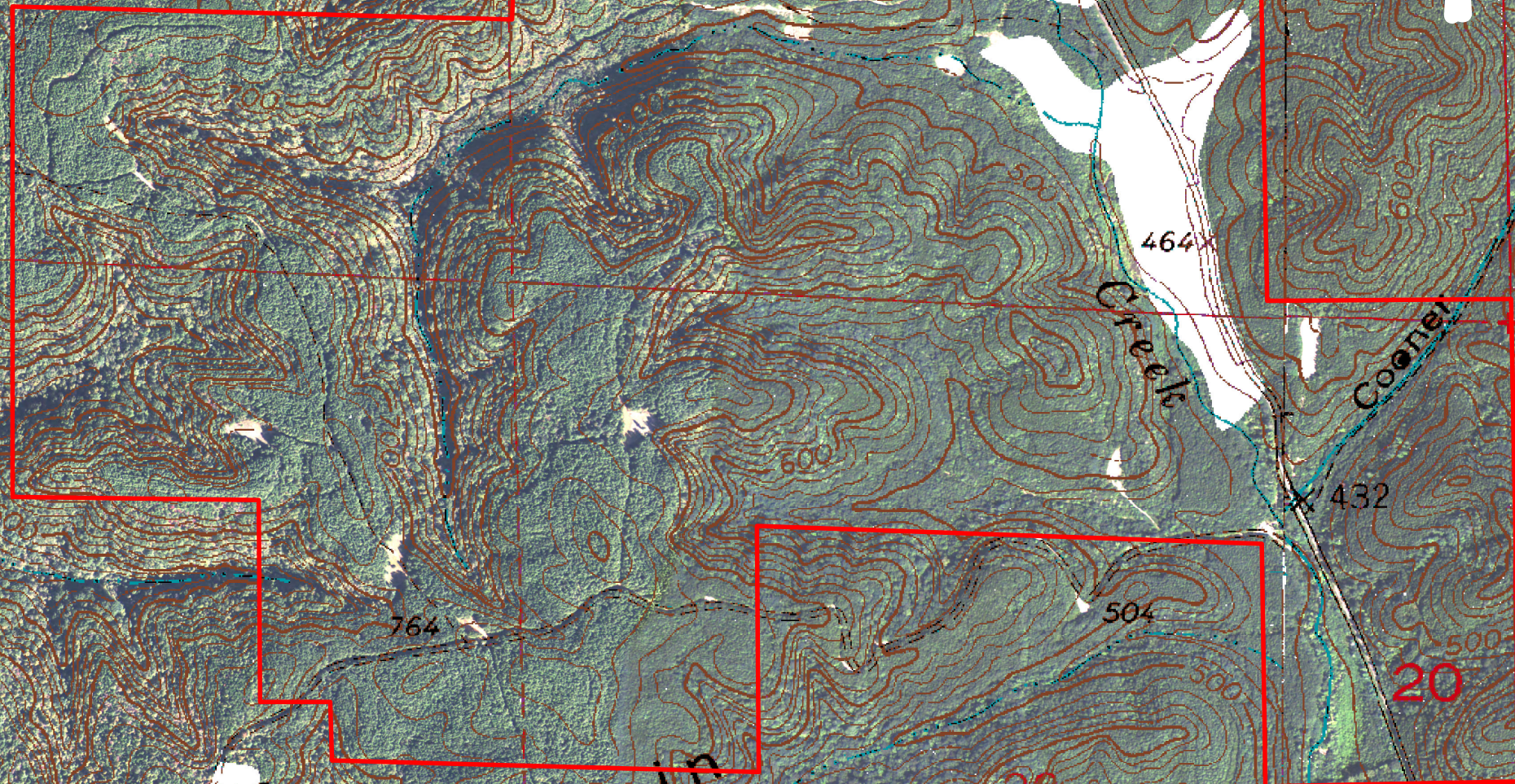


18

LAMEY Tract
Walker County, AL
Sec. 17,18,19,20 T14S-R9W
±692 acres

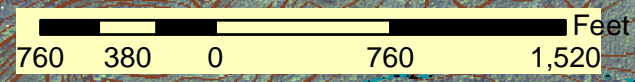


19

20

This is Not a Survey

Map Prepared By: Jim Solvason, RF
Buchanan Timber & Forestry, LLC
TrueSouth Properties, LLC



Mountain

Jess

Hollow

Gravel Pit